

# 2014 Phaeton

A Quick Glance:  
The 2014 Phaeton from Tiffin Motorhomes



# Contents

- 1. Introducing the 2014 Phaeton ..... 3
- 2. Changes at a Glance..... 4
- 3. Interior Color Options..... 22
- 4. Floor plans ..... 23
- 5. Exterior Options..... 25
- 6. Chassis ..... 25

## 1. Introducing the 2014 Phaeton

As we move into the 2014 models, the new Phaeton clearly demonstrates why it is a key player in our line of motor coaches. Some of the items which may have been optional in the past, have now become standard on the new 2014 Phaeton.

The following pages highlight some of the major changes on the interior as well as the exterior. Images are included to assist in identifying these changes. We hope that the consumer will be as excited about the new 2014 Phaeton as we are.

We hope this guide proves useful in previewing our latest product. Most importantly, thank you for all you do to support Tiffin Motorhomes and for continuing to be one of our valued dealers.

## 2. Changes at a Glance

### Exterior

- 450HP Cummins engine on 42' and up (Figure 2-1)

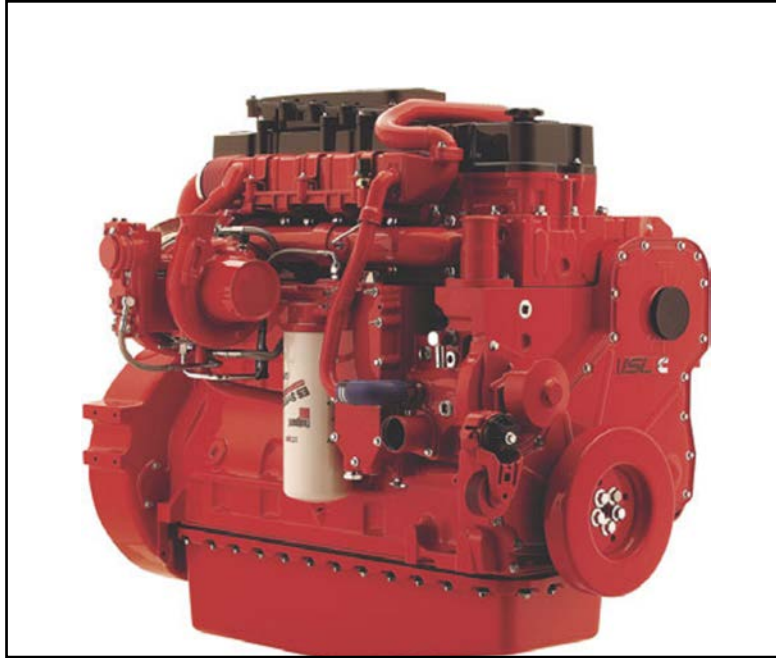


Figure 2-1: 450HP Cummins

- 10K watt generator with all electric or heated floor option (Figure 2-2)



Figure 2-2: 10K generator

- Electric power cord reel (Figure 2-3)



Figure 2-3:

- Painted window frames and glass windows flush with the side of motorhome. (Figure 2-4)



Figure 2-4:



- Powered hose reel added (Figure 2-5)



Figure 2-5:

- Bus style sewer board added (Figure 2-6)



Figure 2-6: Bus style sewer board

- Exterior 42" TV (Figures 2-7)



Figure 2-7: Exterior 42" TV

## Interior

- Integrated seat belts in pilot and passenger seat (Figure 2-9)



*Figure 2-9: Pilot seat*

- New designed step well (no carpet in stepwell) (Figure 2-10)



*Figure 2-10: Stepwell*



- Redesigned ceiling ring (Figure 2-11)



*Figure 2-11: New ceiling ring*

- New wallboard design (Figure 2-12)



*Figure 2-12: New wallboard design*

- New backsplash design (Figure 2-13)



*Figure 2-14: Backsplash design*

- All solid surface countertops (Figure 2-15)



*Figure 2-15: All solid surface countertops*

- New valance design (Figure 2-16, 2-17)



Figure 2-16: Valance



Figure 2-17: Valance



- New design for roller shades (not chain driven). (Figure 2-18)



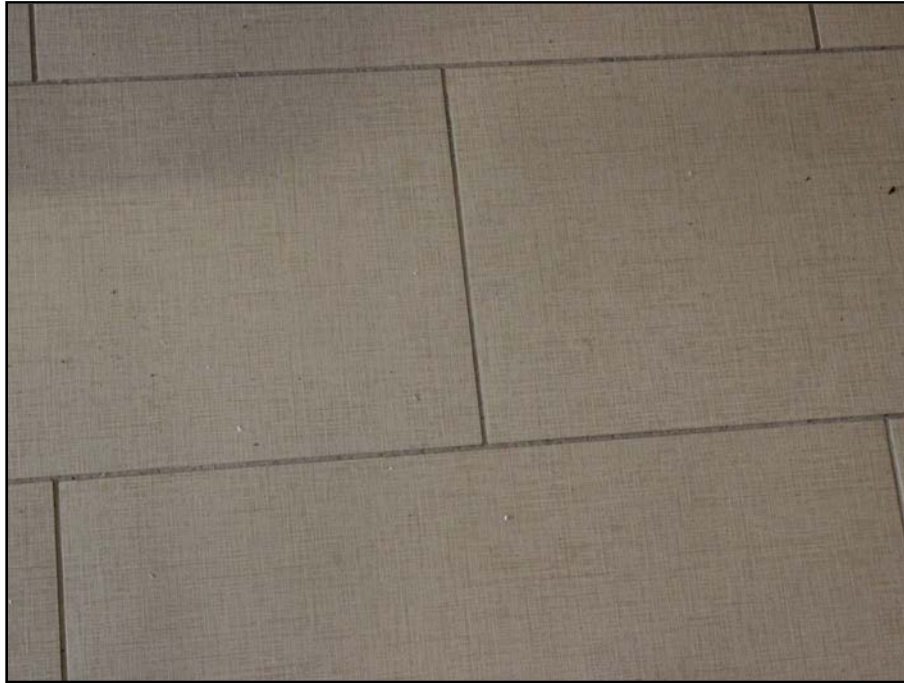
*Figure 2-18: Roller shade end.*

- Updated the Free Standing Dinette to a Dinette Computer Work Station (Figures 2-19)



*Figure 2-19: Dinette computer workstation*

- Full tile standard on all floorplans – (excluding slideout area) (Figure 2-20)



*Figure 2-20: Full tile*

- Redesigned cabinet above passenger seat (smaller footprint) (Figure 2-21)



*Figure 2-21*

- New locking pocket door hardware – eliminates need for pocket door blocks. (Figure 2-22, 2-23)



*Figure 2-22: Pocket door hardware*



*Figure 2-23: Eliminate pocket door blocks.*



- Relocate entertainment center underneath bedroom TV (Figure 2-24)



*Figure 2-24: Cabinet to house entertainment center*

- Added new shower stall with decorative shower door (Figure 2-25)



*Figure 2-25 : Shower Stall*

- Added LED shower light (Figure 2-26)



*Figure 2-26 : LED shower light*

- LED bulbs on all interior light (Figure 2-27, 2-28)



*Figure 2-27: LED bulbs in sconce*



*Figure 2-28: LED bulbs in dinette light*

- Induction cooktop – (only available on units featuring all electric power) (Figure 2-29)



*Figure 2-29 : Induction cooktop*



- XM receiver and antenna - standard (Figure 2-30)



Figure 2-30: XM satellite radio

- Surround sound speakers installed in ceiling (Figure 2-31)



Figure 2-31: Surround sound speakers

- Energy management system with load shedding feature (Figure 2-32)



Figure 2-32: Energy management system



- Aqua hot optional on tag axles (Figure 2-33)



Figure 2-31: Hydro hot

- Optional Heated Tile Floor (requires 10,000 watt generator option) (Figure 2-34)



Figure 2-34

### 3. Interior Color Options

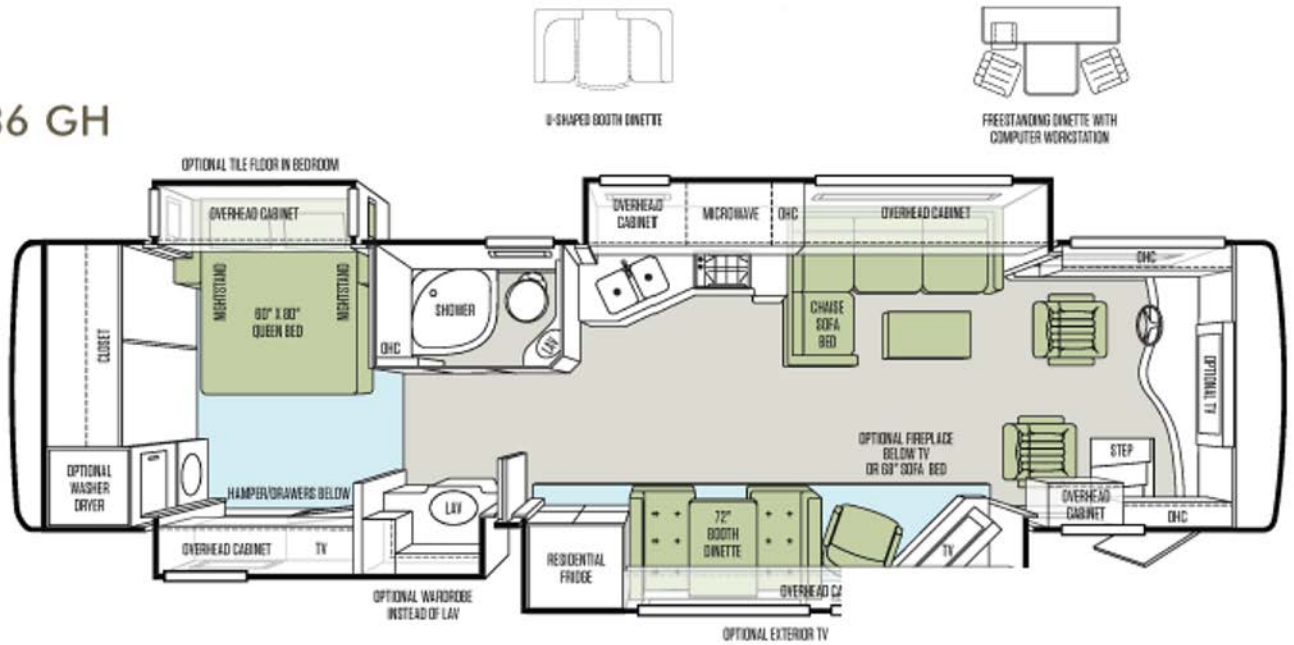
- Alabaster
- Mystere
- Sandpiper

## 4. Floor plans

New floor plans may be introduced throughout the year. Available floor plans include:

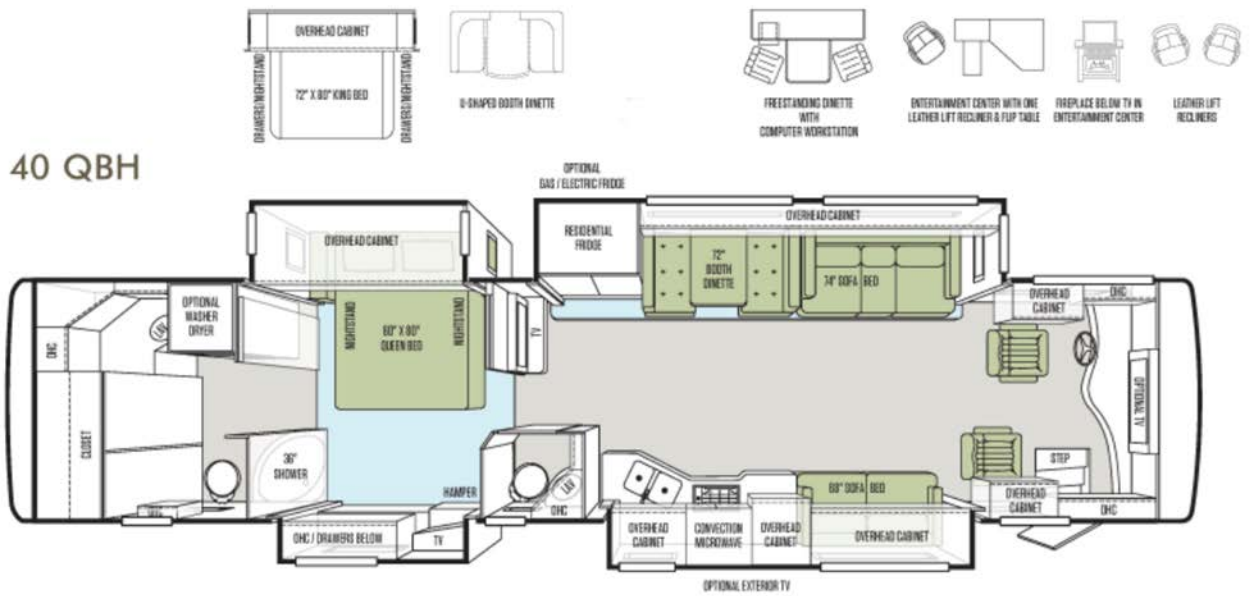
- 36 GH

### 36 GH

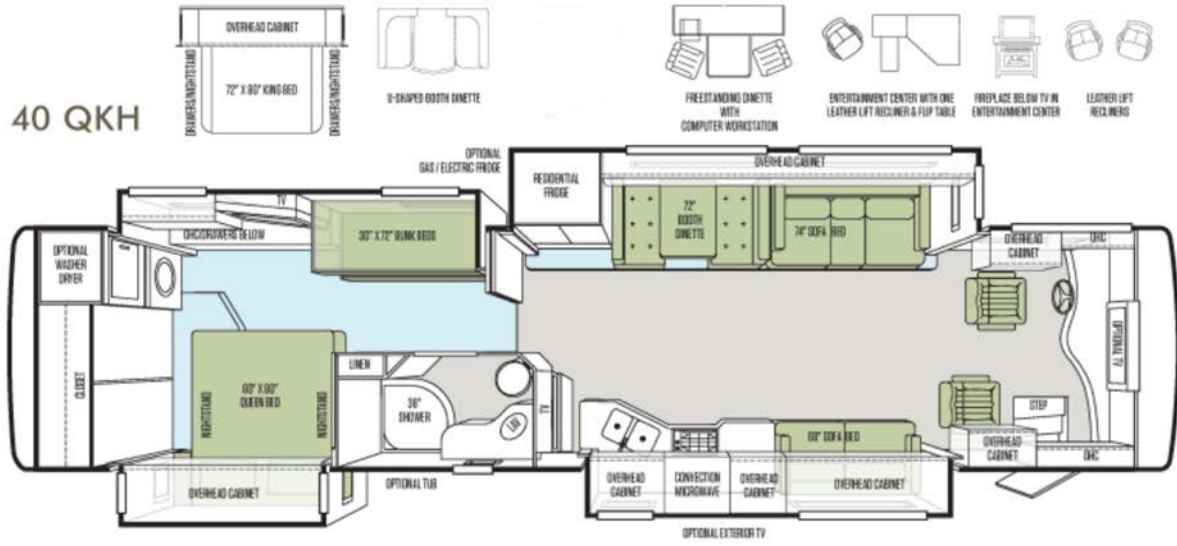


- 40 QBH

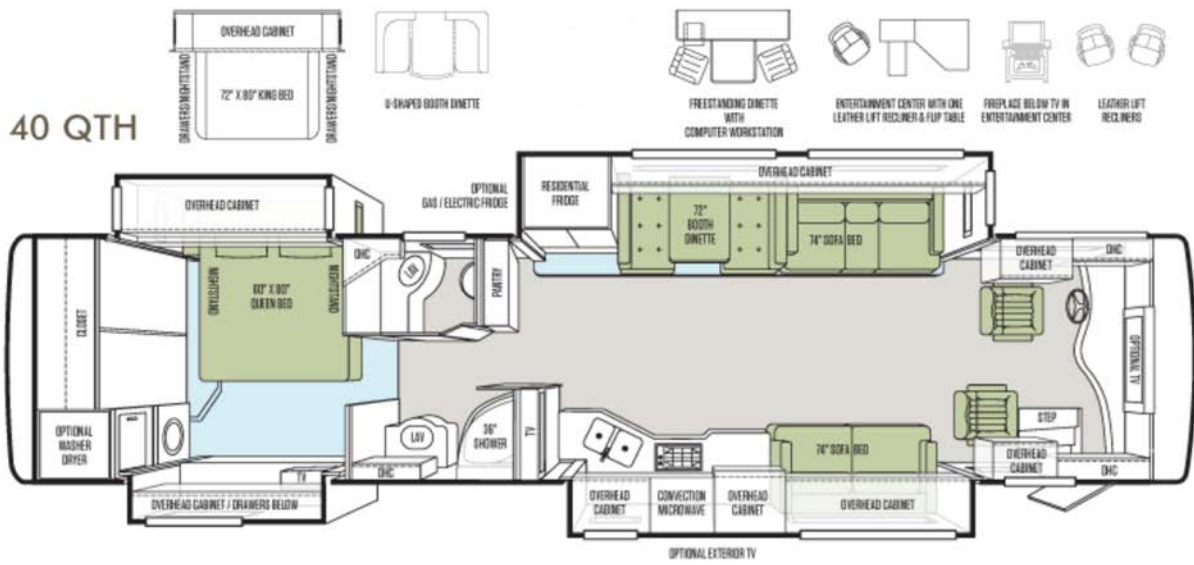
### 40 QBH



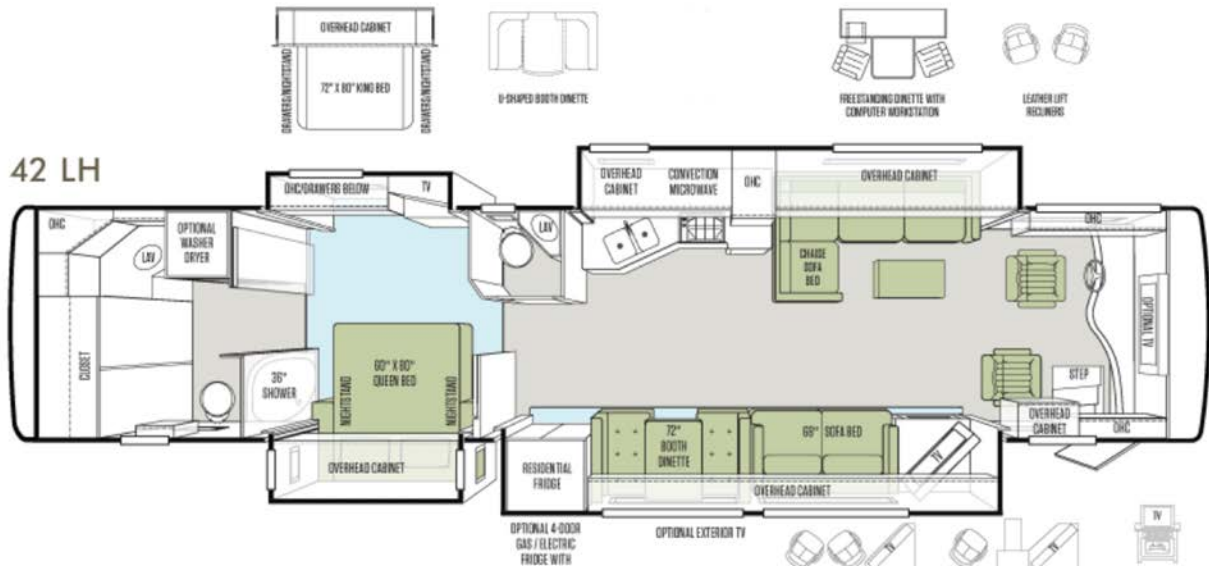
■ 40 QKH



■ 40 QTH



■ 40 LH



## 5. Exterior Color Options

- Gold Coral
- Maroon Coral
- Silver Sand
- Sunlit Sand
- Rocky Mountain Brown
- Rustic Canyon

## 6. Chassis

Tiffin Motorhomes will continue to build the 2014 Phaeton on the Freightliner chassis.

For more information about Tiffin Motorhomes, visit our website at [www.tiffinmotorhomes.com](http://www.tiffinmotorhomes.com).

Tiffin Motorhomes believes that the information in this publication is accurate as of its publication date. Such information is subject to change without notice. Tiffin Motorhomes is not responsible for inadvertent errors. ©2013 Tiffin Motorhomes. All Rights