

2013 Phaeton

A Quick Glance:
The 2013 Phaeton from Tiffin Motorhomes



Contents

1. Introducing the 2013 Phaeton	3
2. Changes at a Glance.....	4
3. Interior Options.....	15
4. Floor plans	16
5. Exterior Options.....	19
6. Chassis	19

1. Introducing the 2013 Phaeton

Welcome to the 2013 Phaeton from Tiffin Motorhomes! Consistently our best-selling brand, the Phaeton also has ranked as the No. 1 diesel seller in America for Class A motorhomes for the past six years. With your help, we expect that streak to continue in 2013.

We continue to listen to our customers and strive to meet their requests on what they would like to see in their new motorhome. Traditionally, our customers and dealers alike anticipate the updates for the new model year. As we begin taking orders for our 2013 Phaeton, this overview guide provides you with a quick glance at many of the changes we have incorporated into our new model. More details on the 2013 Phaeton will follow, along with more photographs and our brochure.

The following pages highlight some of the major changes, with images included with most for easy identification. Hopefully, the additions to the Phaeton will impress both you and your customers.

Whether it's the all new interior designs, exterior paint designs, the 2000 watt Sine inverter, or the ice and water in the door of the residential refrigerator, your customers will continue to relate luxury and value with Tiffin Motorhomes when they step inside the 2013 Phaeton.

We hope this guide proves useful in previewing our latest product. Most importantly, thank you for all you do to support Tiffin Motorhomes and for continuing to be one of our valued dealers.

2. Changes at a Glance

Exterior

- Enhanced appearance with new exterior graphics (Figure 2-1)



Figure 2-1: New exterior graphics

- Added magnetic light with cord mounted to firewall (Figure 2-2)



Figure 2-2: Magnetic light in firewall

- Redesigned roof to allow room for both Winegard Trav'ler (prep) and domed satellites (Figure 2-3)



Figure 2-3: Roof allows room for Winegard Trav'ler and domed satellites.

- Upgraded to 2000 watt Sine wave inverter for cleaner power (Figure 2-4)



Figure 2-4: 2000 watt Sine wave inverter

Interior

- Enhanced appearance with beige dash for more contemporary look (Figure 2-5)



Figure 2-5: Beige dash

- Integrated 42" front overhead TV (Figure 2-6)



Figure 2-6: 42" front overhead TV

- Updated center stack of dash with wooden drawer boxes (Figures 2-7, 2-8)



Figure 2-7: Wooden drawers in dash



Figure 2-8: Drawers closed in center stack

- Incorporated more stylish window treatment in living area (Figure 2-9)



Figure 2-9: New window treatment

- Upgraded design with darker leather for sofa, driver and passenger seats on some interior colors (Figure 2-10)



Figure 2-10: Darker leather

- Added L-shaped sofa option on passenger side (available on 40 QBH, 40 QKH, 40 QTH and 42 QBH)
- Deleted high-gloss cherry bark cabinet color
- Redesigned ceiling ring with radius corners (Figure 2-11)



Figure 2-11: New ceiling ring

- Enhanced wallboard with more contemporary design (Figure 2-12)



Figure 2-12: New wallboard design

- Implemented more stylish backsplash design (Figure 2-13)

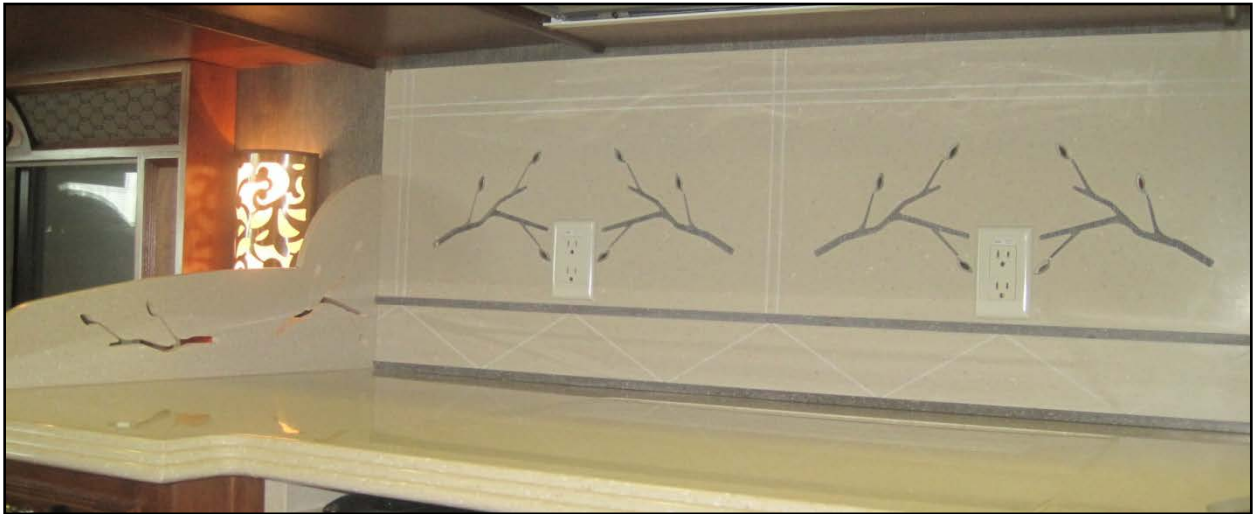


Figure 2-14: Backsplash design

- Added stainless steel Whirlpool microwave (Figure 2-15)



Figure 2-15: Stainless steel whirlpool microwave

- Integrated drawer dishwasher as an option in some models (Figure 2-16)



Figure 2-16: Dishwasher option

- Added extra 110-volt plug to end rear wall by computer dinette (Figure 2-17)



Figure 2-17: Extra 110-volt plug near computer dinette

- Upgraded residential refrigerator to include ice and water in door. (Figure 2-18)



Figure 2-18: Ice and water in refrigerator door.

- Moved home theater system to the bedroom with new cabinet design (Figures 2-19, 2-20)



Figure 2-19: Home theater system in bedroom



Figure 2-20: Home theater system with new cabinet design

- Redesigned night stand making it easier to make bed (Figure 2-21)



Figure 2-21: Redesigned night stand

- Upgraded bedroom window treatment with more stylish appearance (Figure 2-22)



Figure 2-22: Bedroom window treatment

- Added crown molding to vanity in rear bathroom (Figure 2-23)



Figure 2-23: Crown molding in rear bath

- Implemented extra 110-volt plug in rear bath (Figure 2-24)

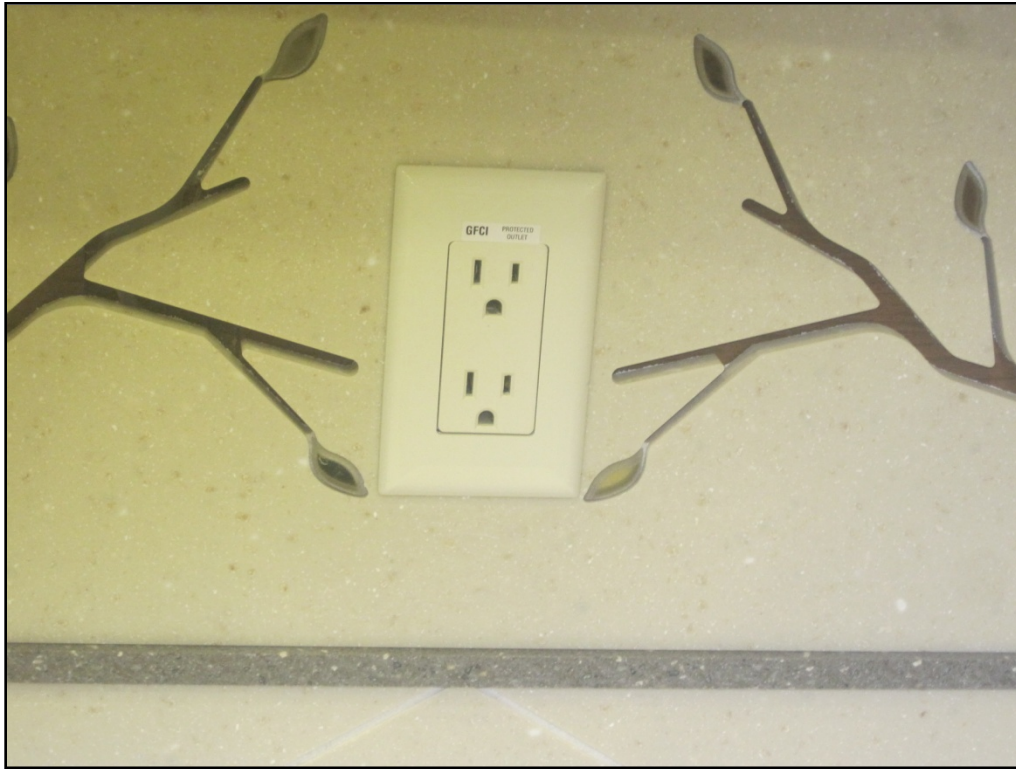


Figure 2-24: Extra 110-volt plug in rear bath

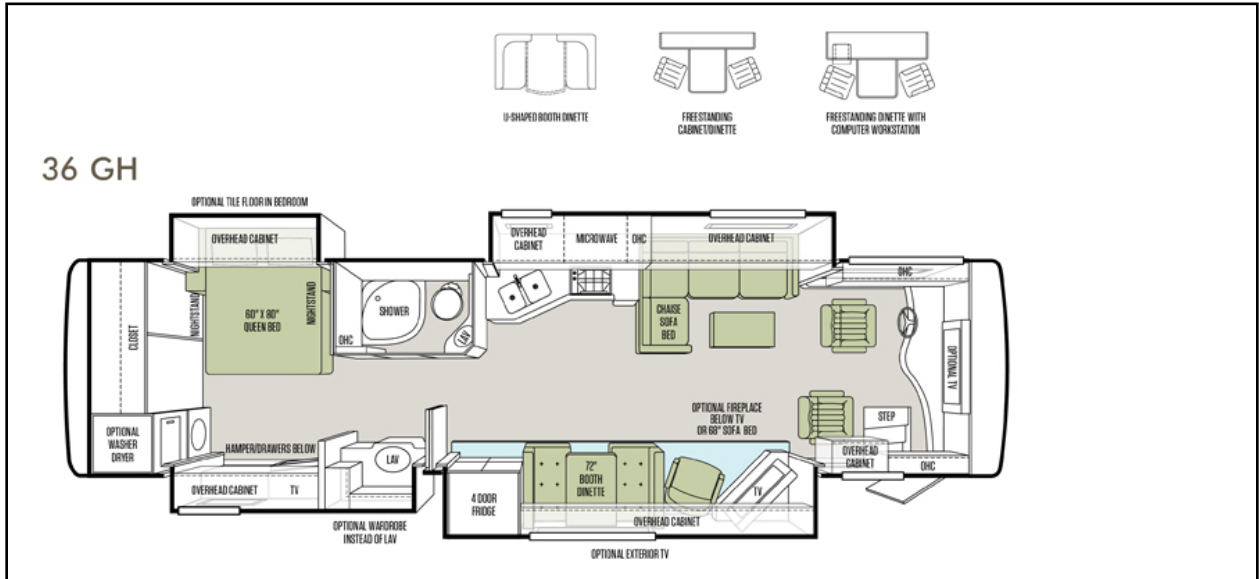
3. Interior Options

- Glitter (new)
- Mystere (new)
- Capri

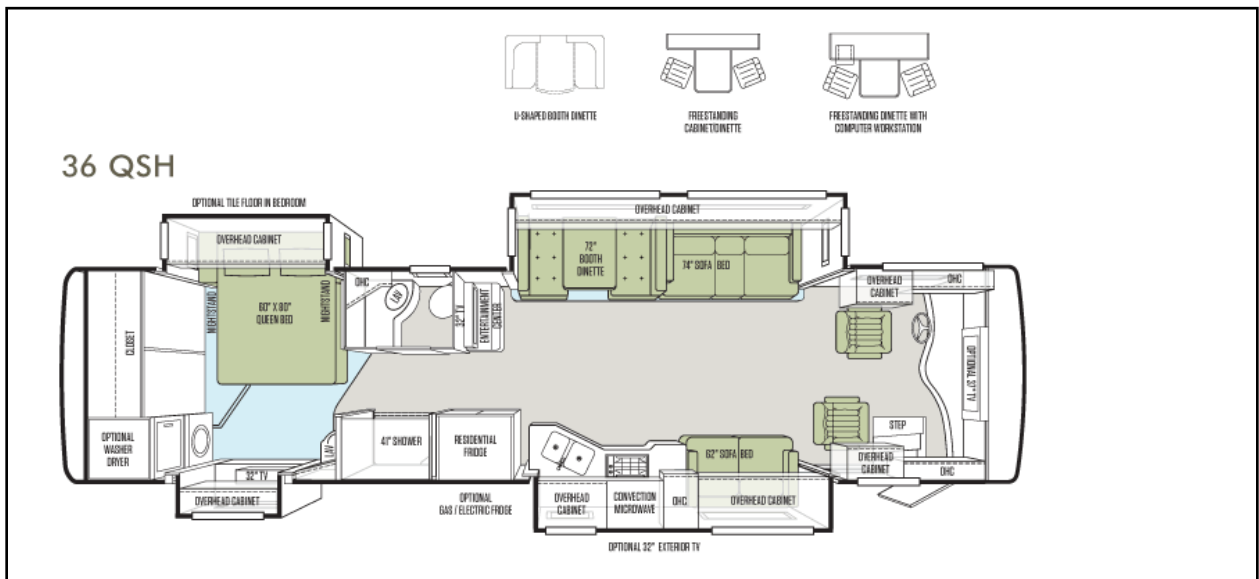
4. Floor plans

New floor plans may be introduced throughout the year. Available floor plans include:

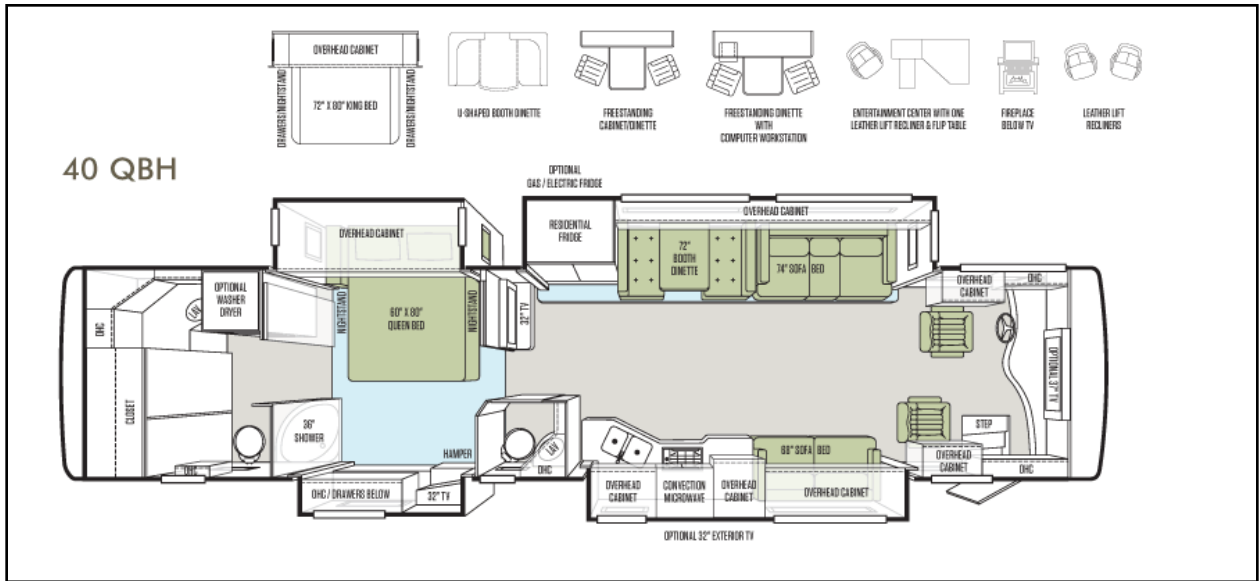
- 36 GH



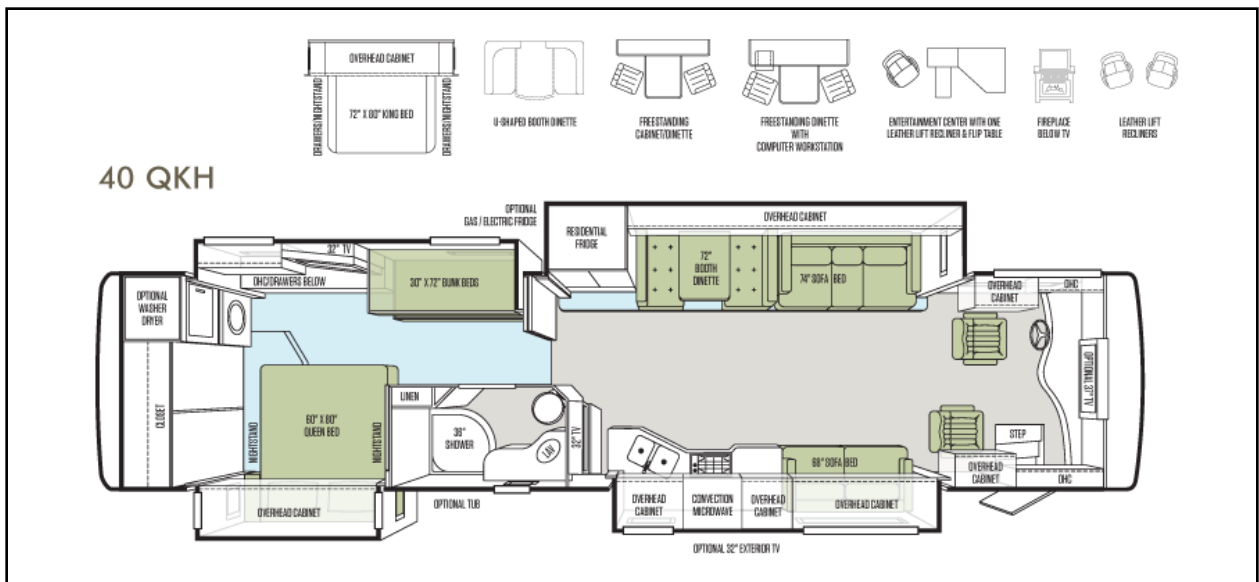
- 36 QSH



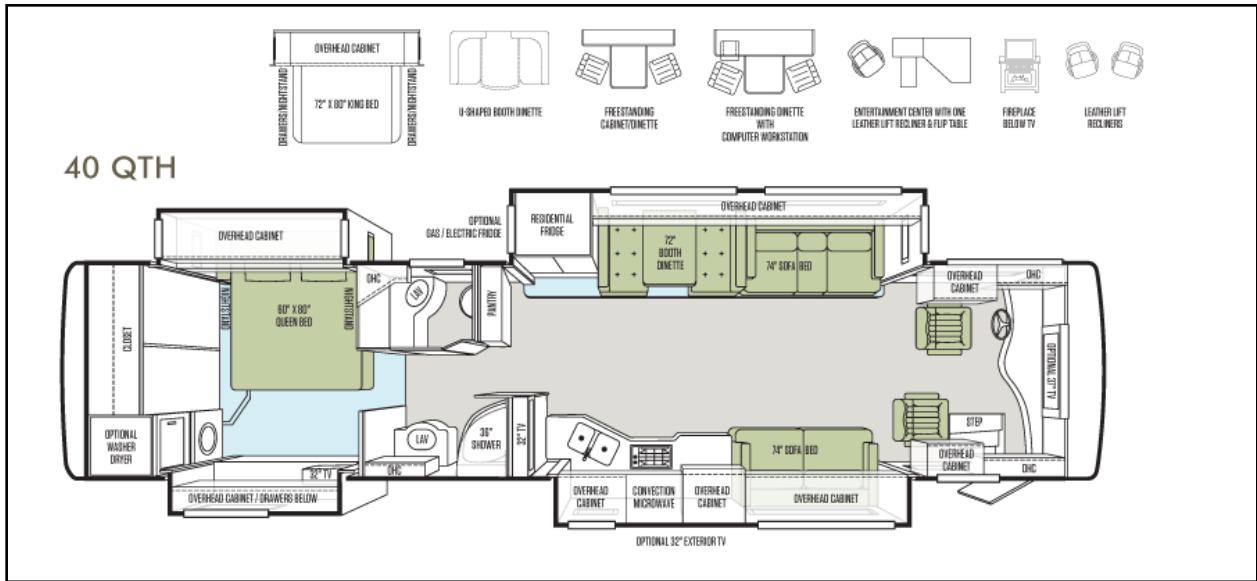
40 QBH



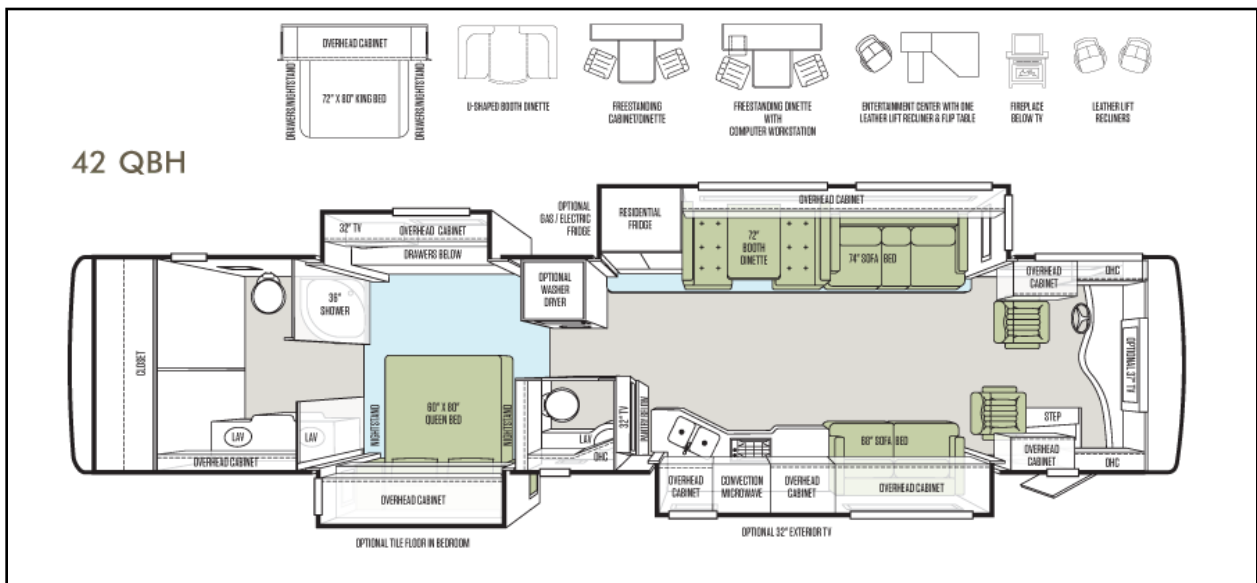
40 QKH



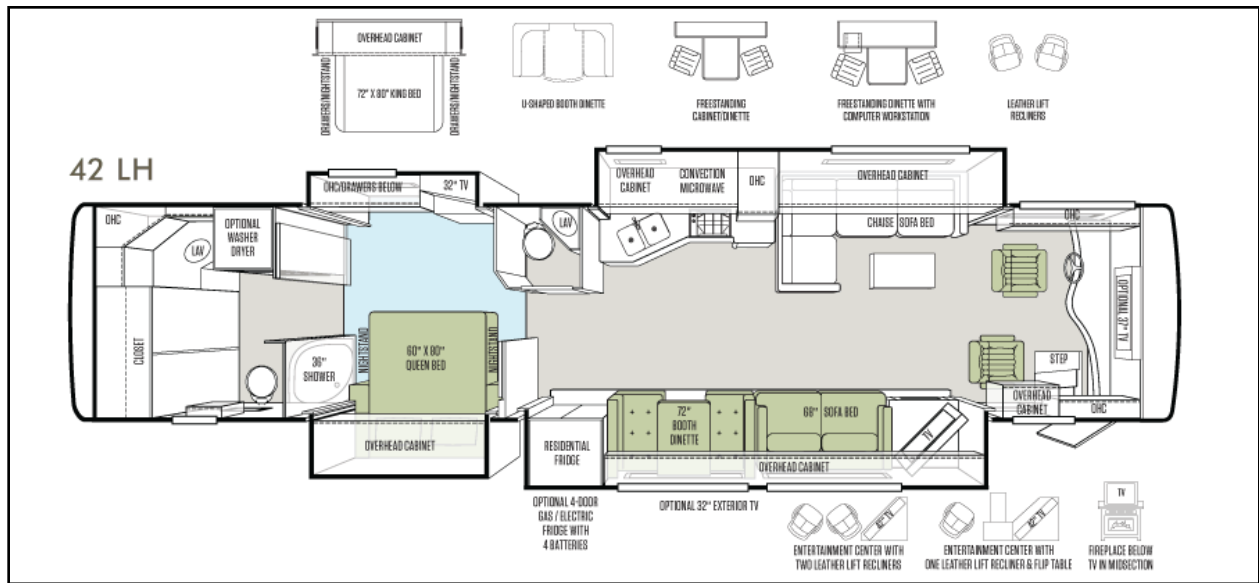
40 QTH



42 QBH



■ 42 LH



5. Exterior Options

- Gold Coral
- Maroon Coral
- Silver Sand
- Sunlit Sand
- Rocky Mountain Brown
- Rustic Canyon

6. Chassis

Tiffin Motorhomes will continue to build the 2013 Phaeton on the Freightliner chassis.

For more information about Tiffin Motorhomes, visit our website at www.tiffinmotorhomes.com.

Tiffin Motorhomes believes that the information in this publication is accurate as of its publication date. Such information is subject to change without notice. Tiffin Motorhomes is not responsible for inadvertent errors. ©2012 Tiffin Motorhomes. All Rights Reserved. 6/12